



Ingrid Moulton Nichols, AIA
Principal
LEED Accredited Professional



Housing Experience (page 2)

Professional Appointments
Vermont Board of Architects
2009-present

AIA NH Board Member 2000-2003
Secretary 2003

NH Department of Education
Review Board 2003

AIA NH PR Committee 2005-present

Community Service
Hartford Vocational Center Advisor
2000-present

Youth and Architecture Program
2000-present

Upper Valley Business and Education
Partnership
2001-present

St. Paul's School Interviewer- ASP
2005-present



West River Valley Assisted Living
Townshend, Vermont

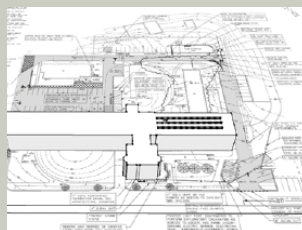
Two story addition to contain 12 new residential units and administrative space totaling 9,500 sf. Also reconfiguration to the existing commercial kitchen and an addition to the dining room totaling 800sf.



Merten's House
Woodstock, Vermont

Architectural Building Design: minor renovations and addition.

- The new addition housed a larger activity room to hold 14 residents and 6 visitors plus an instructor on the upper level and new dining facility on the lower level.



Renovations Included:

- Medications room.
- Private nurses office.
- Combined the tub and shower room.
- New beauty parlor.
- Storage space.
- New accounting office.





Ingrid Moulton Nichols, AIA Managing Principal LEED Accredited Professional



Ingrid Moulton Nichols, AIA, LEED AP is the Managing Partner of Banwell Architects.

She joined Banwell in 2000, and previously worked at BMA Architects in Amherst, NH and Arrowstreet Inc. in Somerville, MA. She attended Carnegie Mellon University (Pittsburgh, PA), Ecole Polytechnique Federal a Lausanne in Lausanne, Switzerland, Dartmouth College and the Advanced Studies Program at St. Pauls School (Concord, NH). She is originally from Lebanon, NH and now resides in South Woodstock, VT with her husband Chris, two shire horses Rex and Thunder, a dog Lily and cat Pee Wee.



Housing Experience (page1)



Windsor Village Apartments Windsor, Vermont

Rehabilitation of 77 residential units configured in three buildings and locate on a 4.48 acre site. Olde Windsor Village was constructed in the early 1800s as a state prison. There are currently 67 units for elderly in two building an ten units for families in one building. The boilers are being replaced to a biomass system.



Newport Housing Newport, Vermont

The proposed project includes retaining and renovating three multifamily residential buildings (one on Main Street, one on Main Street/Sleeper Place and one on Pleasant Street) and demolishing five existing multifamily residential buildings and a carriage house associated with the house on Pleasant Street.



Salemhaven Nursing Home Salem, New Hampshire

Design/Build project with approximately 6,000sf of renovated area. Banwell providing interior finish selections for the renovated area and prepare drawings for the 20x20 storage addition.

Education
B.Arch. 1989-1994
Minor in Management
Carnegie Mellon University

Dartmouth College 1988-89

Ecole Polytechnique
Federal a Lausanne; Switzerland
1992-93

St. Paul's School 1988
Advanced Studies Program

Professional Registration
State of New Hampshire
State of Vermont
State of Massachusetts
New York
New Jersey
NCARB
LEED Accredited Professional

Professional Affiliations
NH Chapter of AIA
NCARB
Rotary International 2004-2008
Plan New Hampshire/USGBC

